

## SEATING SYSTEM COMPONENTS

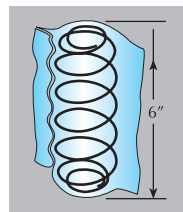


*Leggett & Platt*<sup>®</sup>  
HOME FURNITURE

[LPHomeFurniture.com](http://LPHomeFurniture.com)



## SOFTLUXE™



Noiseless – individually encased 4" or 6" barrel-shaped coils compress inside the pocket without touching

### Design freedom – adapts easily to any existing frame style.

Using the proven performance of individually encased coils from the bedding industry, L&P product engineers reinvented the technology for application into premium furniture using a tempered-wire 4" or 6" barrel coil and high-density coil counts. The result? A seating system that standardizes installation and provides a seat of exceptional comfort and unmatched performance.

### Features & Benefits

- Modular sizing allows one SKU for many product types:  
(sectional = 5 modules, sofa = 3 modules, love seat = 2 modules, chair = 1 module)
- Available in 4" or 6" coil-height profiles
- Automates seating installation to increase manufacturing productivity, decrease costs, and eliminate quality inconsistencies
- Ultra-high coil density (300 per standard sofa) means more working surface wire per seat, allowing greater conformity to body contours
- Uniquely engineered inter-linked coil architecture provides uniform comfort and consistent support over the entire seating area

## MATREX™



**Elastic Webbing Suspensions** – the standard for high-end household and institutional furniture

**Electra™** – the latest innovation in high-quality, all-purpose webbing, designed to meet the most demanding specifications

**Unitrex™** – a patented technology in which Matrex uses precise digital technology in producing MDF or plywood boards

**WebRider™** – provides the best of both worlds – webbing and springs

**Decking** – advanced construction fabrics for decking and intermediate support applications

**Connectors** – hide-away tooth connectors as well as pin connectors are available for sectionals and workstations

**Legs** – constructed of highly durable plastic and available in a variety of sizes and shapes

**WCU™** – the WebRider Compact Unit provides an easily installed seating unit that features the coil/webbing WebRider construction assembled within a metal wire frame

**SinuWeb™** – this sinuous/webbing combination eliminates clips and handling operation, making installation easier

**Synet™** – resilient fabrics for back construction

**Sytex™** – seating support systems based on the unique elastomeric properties of a high-strength polyester elastomer monofilament

**Collage™** – an elastomeric fabric with evolving dynamics created to function as a seating suspension

## 8-WAY HAND TIE

Never Sag™ webbing provides resilient support for the coil springs.

Edge wires are available in a variety of lengths, shapes, and gauges to fit your particular requirements.



**Design Freedom** – any imaginable size or shape of seating cavity can be sprung up with a basic stock of upholstery coils.

**Design Versatility** – using quality Leggett & Platt components (coils, edge wires, propex, twine, steel banding, and clips), a seating foundation can be crafted to hard- or soft-edge designs, straight or curved designs, and deep or shallow designs.

**Tailored Comfort** – any conceivable comfort level can be obtained with that same stock of upholstery coils.

**Consumer Recognition** – the oldest and most traditional furniture foundation is still recognized by consumers as the highest quality seating.

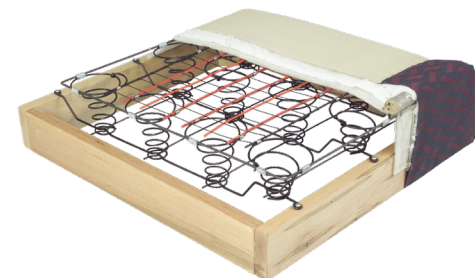
### Key Features & Benefits

- **Installation Versatility** – can be installed on woven polypropylene strips or sheets, or on Never Sag resilient steel webbing; a stock of basic coil sizes can fill any size, shape, and depth of seating cavity
- **Exceptional Durability** – large-diameter, heavy-gauge, low-pitch convolutions produce a virtually indestructible coil; pre-loaded application of the coils, as they are hand-tied, produces a seat deck that will never sag
- **Consistent Quality** – spring wire drawn at Leggett & Platt plants has tolerances that are 50% higher than the industry standard

## COIL FLEX™

Coil Flex™ top grid provides built-in insulator for better support of seat deck.

Time-tested coil spring for a deeper ride and strength.



▪ Available with dropped and eyed base wires (as shown) for screw attachment to front and back rails, or with straight base wires for staple attachment to mounting rails

▪ Coil spring unitized with an oil-tempered spring steel grid (proven in the automotive industry) eliminates noisy top support systems found in other coil spring constructions

▪ Distributes support evenly for uniform seating

▪ 14-gauge Plasteel™ cross supports provide secure and insulated attachment, plus greater lateral stability

▪ Oil-tempered spring wire is utilized throughout for a level, resilient deck

▪ Coil Flex™ is comfort-engineered for the most in support and durability

▪ All the benefits of a coil system, with economical construction for efficient installation

▪ Selection of coil gauges, heights, and coil count for fine-tuned seating comfort

▪ Creates a flat seat deck for a quality, tailored appearance

▪ Available in hard-edge or spring-edge style

▪ Ideally suited for furniture lines with standardized inside dimensions

▪ Available in custom designs, with minimum order requirements, or choose from our selection of stock sizes





## SEAT PLEASER™



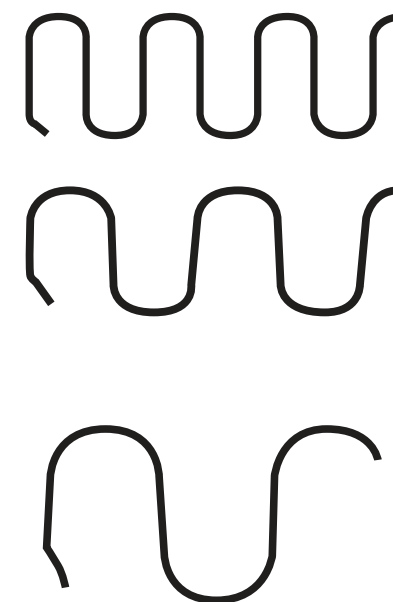
- Seat Pleaser™ combines the comfort of low-height, double-cone Bonnell springs with helically suspended, oil-tempered, spring-wire grid
- Plasteel™ cross supports use plastic-covered 17-gauge oil-tempered wire to stabilize the unit for comfort and durability
- Easily installed in wood or steel frames
- May be purchased pre-installed in steel recliner seat frames
- Attachment method works well with all types of plywood and manufactured wood product frames
- Extra comfort and height of coil springs may save you money on foam cushioning in tight seats
- Modular design and choice of attachment accessories help you standardize your spring-up operation
- The comfort of coil springs with the easy installation of grid suspension
- The seating advantage of a coil spring
- Now you can offer the same deep cushion ride in motion as well as stationary pieces
- Both hard-edge and spring-edge styles can be accomplished with the same spring unit
- Tight-seat, semi-attached, or loose-cushion styling possible

## SINUOUS

Sinuous loop springs for seats



Ask about our different spring ends and special configurations like Sof-Edge®. Seat, back, and over-the-rail clips and links are also available.



### Original No-Sag® (small) loop springs

The “basic” sinuous spring for upholstery operations has been manufactured by No-Sag since its introduction to the U.S. in 1934

### XL Loop® springs

The same width as original loop but the distance between bars is greater. XL Loop is firmer and more economical than original loop. It is recommended where the full action of original loop is not needed

### Supr-Loop® springs

The spring for minimum cost – as well as moderate and maximum coverage. Supr-Loop is ideal for backs and under “tight seat” applications

## PERMA-EZE™ / PERMA-MESH™

Economical spring systems for fully upholstered seating decks



- Choice of oil-tempered (Perma-Eze™) or plastic-coated (Perma-Mesh™) wire
- Choice of helical and hanger applications to provide precise control of firmness
- Instructional/application sheet enclosed in each Perma-Eze and Perma-Mesh package shipped

### Perma-Eze™, Perma-Eze-Plus™, Perma-Mesh™ Grid Construction

- 1” spaced 18 ga. oil-tempered spring wires, which pierce HDPE tubing center cords and are “lock-knotted” around kraft-paper-covered, 12 ga. oil-tempered border wires

### Perma-Eze-Plus™ Grid Construction

- Identical to Perma-Eze except for its 12 ga. oil-tempered plastic-covered border wires

### Perma-Mesh™ Springs

- Economical system for exposed seating decks
- Identical to Perma-Eze except for the plastic coating of the spring wire grid, which helps protect the spring unit
- Spring and insulator are combined into one application

## SUPERFLEX™ SEAT HINGE SYSTEM



- Top-quality comfort
- Creates deep ride while maintaining proper support
- Cost-effective
- Great for motion seating or stationary applications

### Torsion Spring Action

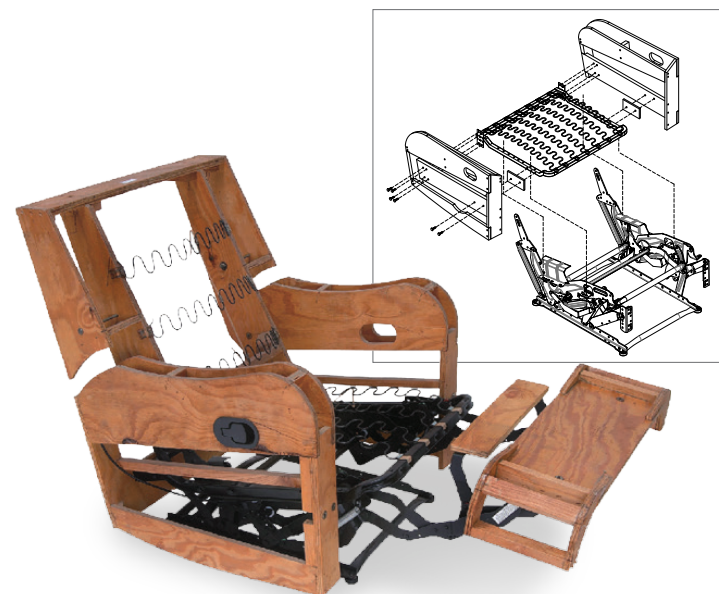
- Unique torsion action of the engineered No-Sag® sinuous spring creates luxurious comfort
- The special bend may be installed front or back
- May be used with or without the hinge link

- Lever action of open-end hinge link gives an even deeper ride and controls the depth, angle, and position of the spring action
- Hinge links may be used in front, back, or both – to achieve the perfect feel
- Fine-tune the balance points of your motion seating or stationary applications

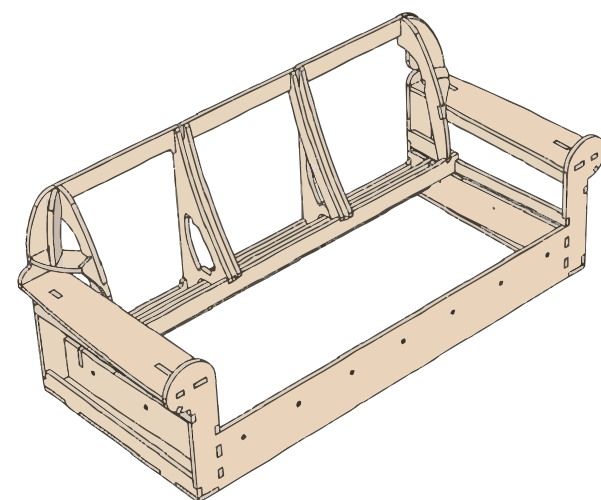
## METAL SEAT BOX

The Metal Seat Box provides sturdy seat support and eliminates assembling labor. Its tubular steel gives consistent size and stability, allowing the product to be stable when getting in and out of furniture.

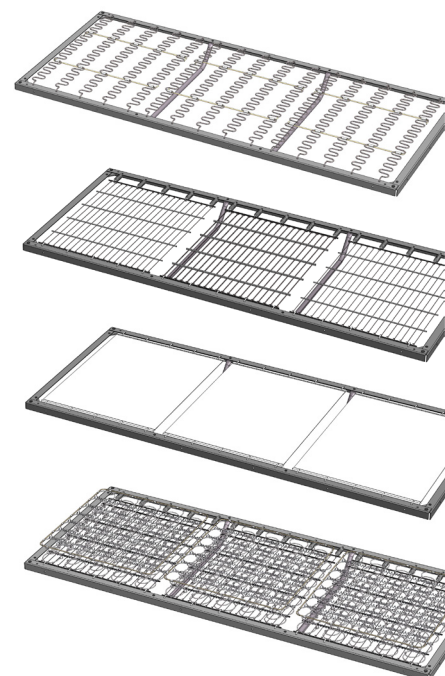
Metal Seat Box offers total consistency from frame to frame, exceeds push-off requirements, and gives the product a solid feel.



## STANDARDIZED STEEL FRAME SYSTEM



- Reduces stress on wood frame
- Makes high-leg, thin seats possible
- Reduces cost of wood frame
- Standardization allows for assembly automation
- Improves through-put time
- Can be installed in frames before the glue has cured
- Reduces spring-up labor



## SOFTLUXE™ SEAT CUSHION SYSTEM



### With Coil Max™ Technology

SoftLuxe, with patent-pending Coil Max technology, allows for virtually all foam to be replaced in a seat cushion with our fabric-encased Coil Max coils. Coil Max coils are wrapped with a unique dual-density, needle-punched fiber. Since Coil Max coils provide up to 21% less breakdown than the foam used in traditional seat cushions, warranty costs are substantially reduced as customers enjoy their cushions for years.\*

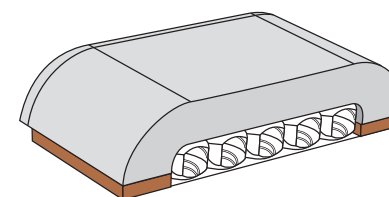
\*Reduced warranty-covered product replacements when compared to all-foam seat cushions.

### With Bolsa™ Coils

To create SoftLuxe™ Bolsa™ coils, the specially designed springs are stress-relieved to improve resiliency and performance and extend furniture life. As a result, SoftLuxe Bolsa provides up to 21% less breakdown from use than traditional foam seat cushions. With fabric-encased Bolsa coils and the reduction of warranty-covered product replacements\*, SoftLuxe is the smart choice for seat and back cushions.\*

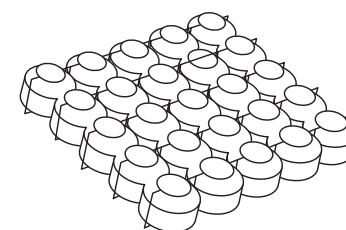
## COIL-WEB SLIP SEAT

Active Support System



Coil-Web Slip Seat cross section

Patent No. 10,426,268 B1



Softech coil spring unit

**The deepest ride, most resilience, and longest life available in a thin-profile seat.**

Utilizing our new Softech coil technology, the spring unit nestles into the cavity formed by the cutout of the seat board. It rests atop full-coverage Sytex sheet webbing, which is applied to the bottom face of the seat board. The 1.5"-high coils provide a more resilient and long-lasting crowning push to the overlying seat

foam than a conventional foam block. This creates a patent-pending Active Support System that, for the first time, incorporates the full thickness of the slip seat. The result is the most resilient, most comfortable, and longest lasting seating available.





## Relax Outdoors HIGH-FLOW OUTDOOR CUSHION

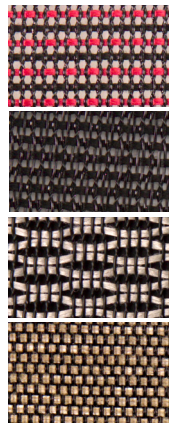


The High-Flow Outdoor Cushion (*patent pending*) combines stainless steel coils with an innovative, new warp-knit polyester fabric to create the ideal pocketed coil innerspring unit for use in outdoor seats and backs.

The open-knit fabric cover promotes the free flow of water and air through the core, preventing a buildup of water in furniture that is left outdoors by allowing it to exit the cushion quickly and completely.

Our high-flow cushion core replaces a significant portion of the densified fiber or reticulated foam currently used in most outdoor cushions.

## Relax Outdoors COLLAGETM



Featuring the very best seating support that today's technology has to offer, Collage offers ergonomic comfort, durability, and unique, creative fabric designs.

Collage fabrics have a polyester co-polymer elastomeric monofilament on the warp direction. The fill yarns may be polyester, nylon, or other fiber depending on the intended use. Collage is available in many colors. Applications include residential, office, healthcare, and transportation, among others.

## Relax Outdoors SYTEXTM

Sytex is a 100% synthetic product, and exhibits improved heat-aging properties, outstanding resistance to ozone, and will not sag after years of use. More economical than conventional webbing, Sytex will outlast metal spring seats and is unaffected by the elements.

Sytex seating support systems surpass the requirements of all governments and business-technical specifications, including FNE 83-258-B and BIFMA.



*Leggett & Platt*  
HOME FURNITURE

800.888.4569  
HFC@leggett.com  
LPHomeFurniture.com